

City of Holmes Beach Multi-Modal & Beach Access Improvements Tourist Development Funding Request

October 2025



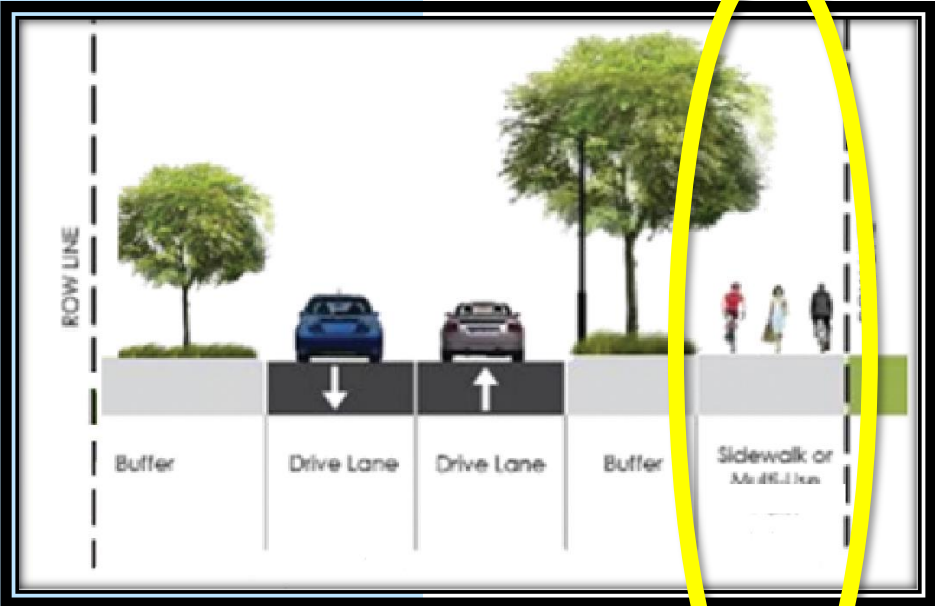
Holmes Beach Multi-Use Paths

Cost Estimate

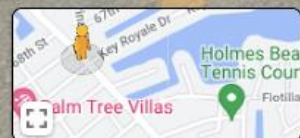
	PROJECT COSTS	CITY OF HOLMES BEACH	TDT REQUEST
Marina Drive (59th to 66th St)- Multi-Use Path	\$ 175,011		\$ 175,011
Marina Drive (56th to 66th St)- Multi-Use Path (Completed)	\$ 64,478	\$ 64,478	
Midblock Crosswalk: Rectangular Rapid Flashing Beacons	\$ 20,000		\$ 20,000
Education Signage and Pervious Beach Access (65 th ST)	\$ 200,000		\$ 200,000
Engineering Design	\$ 68,923	\$ 68,923	
Total Cost	\$ 528,412	\$ 133,401	\$ 395,011

Marina Drive Multi-Use Path

Multi-Modal Path Program



Existing 8' path to
City of Anna Maria



Search Google Maps



Existing 4' Path

6503 Marina Dr

Holmes Beach, Florida

Google Street View

Jun 2023

See more dates

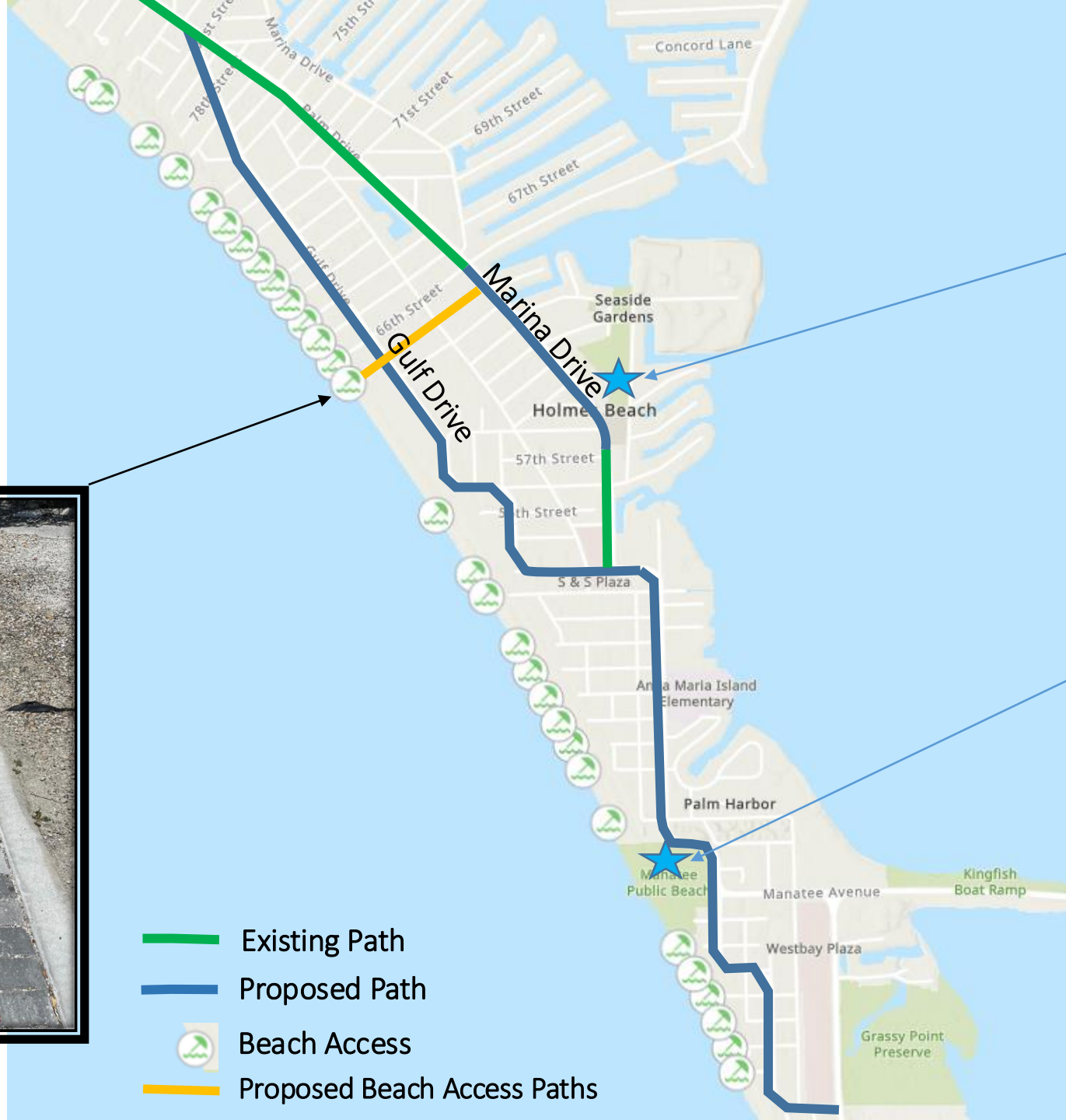
Google

Image capture: Jun 2023 © 2023 Google United States Terms Privacy Rep

Marina Drive Multi-Use Path (start)



Connects Facilities to Beach Accesses



- City Field
- Playgrounds
- Tennis Courts
- Pickleball Courts
- Skate Park
- Exercise Path
- Waterfront Park

- Manatee County
- Public Beach



Existing Parking
To Remain

Proposed Path

201 58th Street, Holmes Beach, FL



Search

Room for Proposed
Path
No Existing Parking

213 65th St

Holmes Beach, Florida

Google Street View

Jun 2023


See more dates

Google


Image capture: Jun 2023 © 2023 Google United States Terms Privacy



Beach Access



Parking





217'

EXISTING FPL
POWER POLE

37'

SHELL DRIVE

PROPOSED 9'
WIDE PARKING

EXISTING
ASPHALT

9'

~41'

18'

5'

PAVER
DRIVE

EXISTING FPL
LIGHT POLE

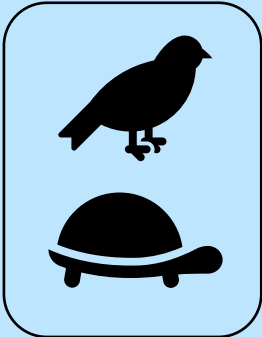
PROPOSED 5'
CONCRETE
SIDEWALK

PROPERTY
APPRAISER
ROW

Provides
Improved
Connection to
Beach Accesses,
Neighborhoods,
Civic Uses &
City Center
Businesses

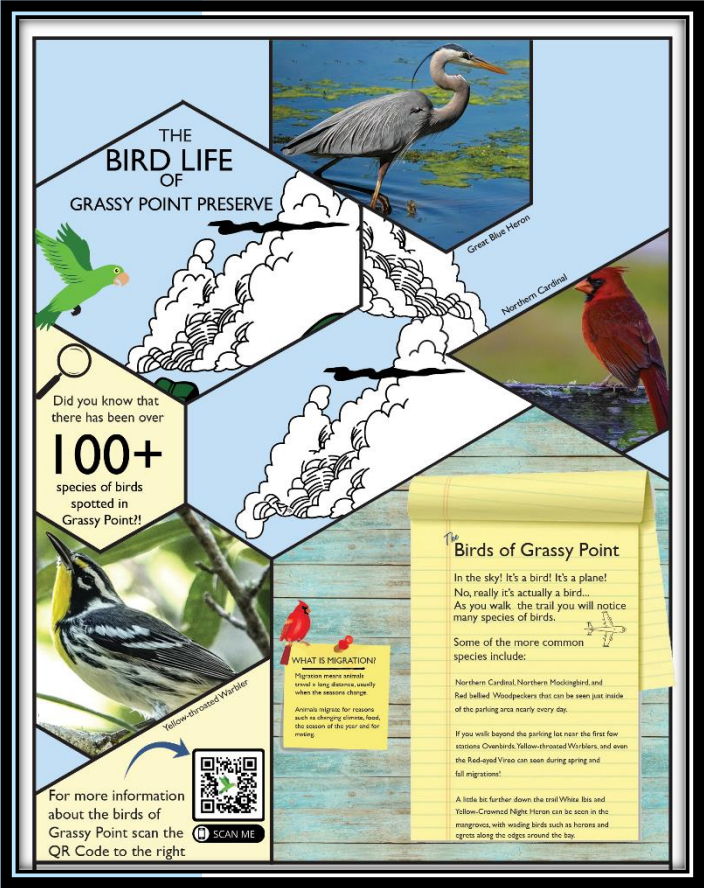


Natural Environment Education Signage At Beach Access Paths

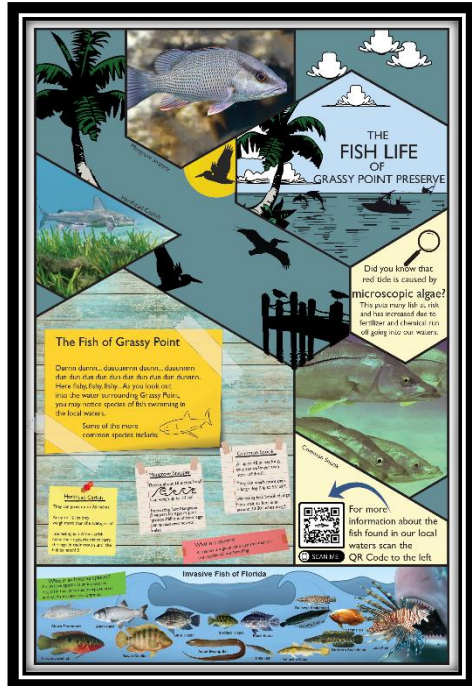


Educational Signs

- Existing Path
- Proposed Path
- Beach Access
- Proposed Beach Access Paths



Natural Environment Education Nature Center Kiosk at Waterfront Park

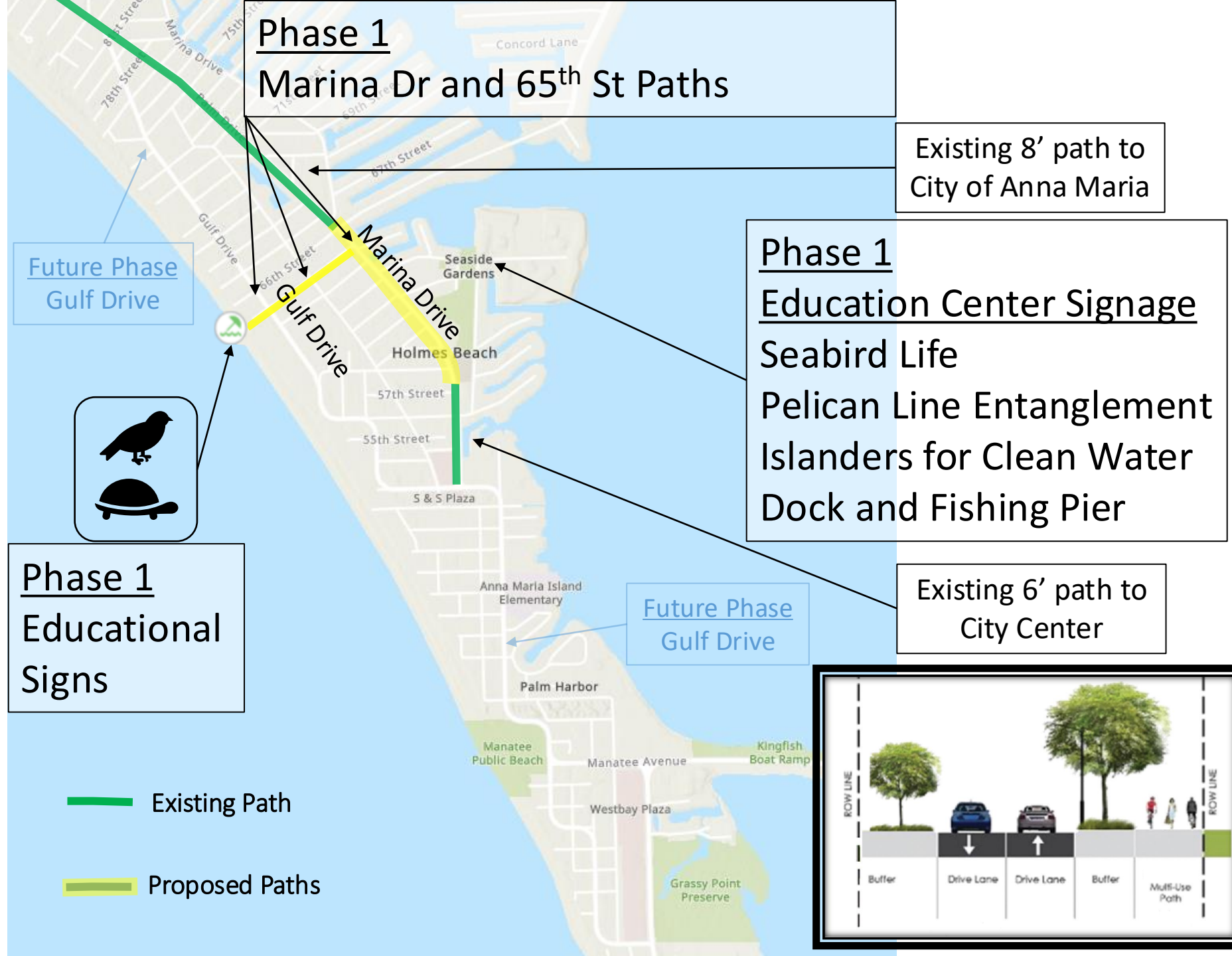


Education Signage
Seabird Life
Pelican Line
Entanglement
Islanders for Clean
Water
Dock and Fishing Pier



Multi-Modal Program

Multi-Use Paths, Beach Access, and Educational Signs



Holmes Beach Multi-Use Paths

Cost Estimate

	PROJECT COSTS	CITY OF HOLMES BEACH	TDT REQUEST
Marina Drive (59th to 66th St)- Multi-Use Path	\$ 175,011		\$ 175,011
Marina Drive (56th to 66th St)- Multi-Use Path	\$ 64,478	\$ 64,478	
Midblock Crosswalk: Rectangular Rapid Flashing Beacons	\$ 20,000		\$ 20,000
Education Signage and Pervious Beach Access (65 th ST)	\$ 200,000		\$ 200,000
Engineering Design	\$ 68,923	\$ 68,923	
Total Cost	\$ 528,412	\$ 133,401	\$ 395,011